



SEATTLE SECTION NEWSLETTER

September 2015
Volume 51 No. 1

Section Officers

October 1, 2014 – September 30, 2015

SEATTLE SECTION OFFICERS

Stefanie Herzstein, *President* 425-896-5219
Evan Sheesley, *President-Elect* 206-859-0224
Elizabeth Korb, *Secretary* 206-331-1176
Gene Gladden, *Treasurer* 425-281-7288
Perry Cole, *Immediate Past President* 425-471-9022
Jessica Aguilar, *Director (2015)* 206-357-5625
Lisa Harbert, *Director (2016)* 206-371-3079
Amanda Shellenberger, *Director (2017)* 206-903-3371

YMF OFFICERS

Courtney Davis, *President* 206-926-0451
Cal Bearman, *President-Elect* 206-764-5253
Don Nguyen, *Secretary* 203-216-3933
Tara Burton, *Treasurer* 425-406-7118
Elizabeth Clark, *Board Representative* 425-468-1507

UW/SEATTLE U CONTACTS

Amy Riley, *University Advisory Committee Chair*
amy.riley@seattleu.gov

KITSAP BRANCH OFFICERS

David Dinkuhn, *President* 360-850-5319

NORTH BRANCH OFFICERS

Gabe Ng, *President* 206-718-5252

BOEING BRANCH OFFICER

Vinny Avendano, *President*
vinicio.p.avendano@boeing.com

WEBMASTER

Eric Knigge
seattleasce@yahoo.com

ASCE Seattle Section and Sustainability Committee Joint Meeting

Wednesday, September 9, 2015

Place: Best Western Executive Inn
200 Taylor Ave N, Seattle, WA 98109

Cost: Early Bird:
\$40 General Admission
\$15 for students and unemployed members
**(Early Bird Rates apply until 11:59 pm,
Wednesday, September 2.)**

After September 2 :
\$45 General Admission
\$20 for students and unemployed members

Meal: Tender London Broil Marinated in wine and seasonings and
grilled to perfection, with garlic mashed potatoes and Dijon
mushroom demi glaze

-or-

Baked Salmon with BBQ Citrus Sauce Served with Chef's
choice of starch and seasonal vegetable medley

5:30 Social
6:30 Dinner
7:00 Program

[Click here to register.](#)

For assistance with online registration, please contact
Don Nguyen at dnnng@b-t.com or 206-830-0420

Direct questions or comments regarding meetings to
Section President Stefanie Herzstein at
seattleascepresident@gmail.com

Program — Sustainability: an ASCE Strategic Initiative

With sustainability growing in importance to civil engineering, ASCE has made it one of three strategic priorities for the Society, helping professionals to incorporate sustainability principles into their daily practice. "As the stewards of society's infrastructure, civil engineers must take the lead in applying sustainability to planning, design, and construction" (ASCE website). By naming sustainability as one of its three "Strategic Initiatives," ASCE's Board of Direction has affirmed that civil engineers must become competent in the principles of sustainable development to fulfill our responsibility to society as the

See [September Meeting](#) on page 3

The next newsletter deadline is:
5:00 p.m.
Sunday, September 20, 2015

~~~~~

Newsletter Editor:  
**Todd Crandell**  
[seattleASCEnews@gmail.com](mailto:seattleASCEnews@gmail.com)  
Phone: (206) 459-2250

#### CHANGE OF ADDRESS:

All changes to your address (including your newsletter e-mail address) should be provided to ASCE at [www.asce.org](http://www.asce.org) or: 1801 Alexander Bell Drive, Reston, VA 20191-4400. The Seattle Section will receive your updated information from ASCE.

AMERICAN SOCIETY OF  
CIVIL ENGINEERS, SEATTLE SECTION  
<http://www.seattleasce.org>

Volume 51 No. 1, September 2015  
Published 10 times a year

#### ASCE SEATTLE SECTION NEWSLETTER ADVERTISING RATES

##### Employment Ads:

\$75 for one month on web site and in the newsletter; \$50 per month for subsequent months

##### Display Ads:

Costs are for one year (10 issues):  
Business Card size \$100  
Quarter page \$250  
Half Page \$500  
Full Page \$1,000

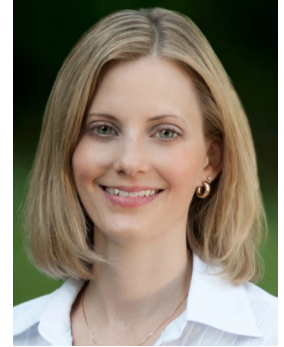
To place an ad or for more information, contact the editor at [seattleASCEnews@gmail.com](mailto:seattleASCEnews@gmail.com).

## President's Column

By Stefanie R. Herzstein, PE, PTOE, M.ASCE – Seattle Section President

*Advocacy – Get Involved in ASCE's Key Contact Program*

As I end my term as President and we start back with our regular programming, I want to encourage you to engage in our Section and the Society. ASCE offers many ways to participate in your profession both locally and nationally. The Seattle Section meets the 2nd Wednesday of each month for a dinner meeting and we also have committees such as community services, K-12 outreach, water resources, transportation and development, and many more to join. The Society also offers many opportunities nationally to get involved whether leadership, education, sustainability, advocacy and many others.



One such great opportunity related to advocacy is the ASCE Key Contact Program.

*Key Contacts influence the policy process at the state and federal levels by developing relationships with elected officials. By meeting and making contacts with your elected officials in several ways, you can achieve true conversations about issues important to the profession, and become a trusted advisor when bills are drafted or considered.*

- Meet with your elected officials close to home by [requesting a Back Home Visit](#).
- Attend the [Legislative Fly-In](#) to learn about the latest issues affecting the profession and lobby your Representative and Senators directly.
- Listen to a [Key Contact Briefing Conference Call](#) on a hot issue currently affecting the civil engineering profession. (ASCE member login required)

[Join the Key Contact program](#) today!

## Registration is Open, Opening Keynote Named for First ASCE Convention

Civil engineers from across the country and around the world will converge on New York City in October for the first [ASCE Convention](#). Explore the state of the industry and profession via a thought-provoking, [multidisciplinary program](#) that can earn you as many as 24 PDHs. You'll be inspired by opening keynote speaker Luke Williams, an authority on business innovation leadership. Registration is open; sign up now and save as much as \$200. Get details on the inaugural [ASCE Convention](#).



## Opportunities to Participate in Seattle Section Committees

There are numerous opportunities to participate in Seattle Section committees. To get involved in the following committees, please contact the individuals listed below.

### Diversity Committee

Contact Kelli Dean at [kellidean@yahoo.com](mailto:kellidean@yahoo.com).

### ASCE/SEAW Lifeline and Earthquake Engineering Committee

Contact Lisa Harbert at [lisaharbert@ymail.com](mailto:lisaharbert@ymail.com).

### September Meeting (continued from page 1)

stewards of its infrastructure. Civil engineers are uniquely positioned to become leaders in supporting the global economy by providing effective, efficient and ethical infrastructure to the shipping/logistics industry. As the chair of ASCE' Committee on Sustainability and as the Director of Program Management for the Port of Long Beach, Mr. Sereno will present ASCE's commitment to sustainability and how it can be applied in the port industry.

## ASCE Seattle Section Geotechnical Group Joint Dinner Meeting with AEG Washington

Date: Thursday, September 17, 2015

Time: 4:30-Planning Meeting, 5:30-Social Hour, 6:30-Dinner, 7:30-Program

Topic: Nepal Earthquake Recovery

Speaker: Jared Smith

Place: Best Western Executive Inn, 200 Taylor Avenue North, Seattle, WA 98109

Contact: For any questions, contact Lynn Salvati at [salvati@mcmjac.com](mailto:salvati@mcmjac.com)



Find out how your firm can benefit from our **25+ years of Experience** serving your industry.

## Professional Liability Insurance Specialists for Civil Engineers

**HALL & COMPANY**

Serving Architects, Engineers and Environmental Consultants

(360) 598-5019 [swatson@hallandcompany.com](mailto:swatson@hallandcompany.com)

[www.hallandcompany.com](http://www.hallandcompany.com)

---

## 2015 Richard Williamson Jones Memorial Award Recipient Named

The Seattle Section of ASCE has selected Mr. Jacob DeBernardi as the 2015 Richard Williamson Jones Memorial Award recipient. Mr. DeBernardi is a student at the University of Washington and is studying structural and construction engineering. Jacob has been involved in the Steel Bridge and Concrete Canoe competitions and is serving as an ASCE Student Chapter Officer. Jacob is both a President's Scholar and a Dean's Scholar.

The Richard Williamson Jones Memorial Scholarship was established by his wife, Kathie, because Richard often commented that when he was a student, he would have been much better off if he had just had a little more money for books and supplies. The scholarship continues through Kathie Jones' estate.

Richard Jones was a civil engineer and a member of the Seattle Section of ASCE, when he died in an airplane crash at the age of 53. He was a graduate of the University of Washington and was admitted as a Member of the Society in 1949 and as a Fellow in 1959. Mr. Jones joined General Construction Company in 1933 where he worked on many projects in the Seattle and Portland area, including the Bonneville Dam and as Chief Engineer on the Hungry Horse Dam. At the time of his death, he was Executive Vice President of General Construction Company.

The maximum scholarship amount distributed annually is \$2,000.

## Reach over 2,000 Engineering Professionals

**Post Your Employment Ad in this Newsletter  
and on the Seattle Section Web Site**

**See advertising details  
on page 2**

### New Member Report

Based on the new membership information from the ASCE national database, the following members enrolled to the Seattle Section between May 5, 2015 and May 26, 2015.

Chad Wiggins

Ashton McGrath

Steven Costello

Stephen Wilson

John Alexander

Jingjing Hua

Tyron Bardwell

Matthew Colling

---

---

## Employment Notices

To post an employment notice in the newsletter and on the Section's web site, please contact the [newsletter editor](#) in advance of the monthly deadline (the 20th of the month). Rates for advertising are shown on page 2.

---

---



### Intermediate Structural Engineer

#### Minimum Qualifications:

- 3+ years' experience in the engineering design of industrial structures including piling, steel framing, steel connection details, reinforced concrete details, foundations, masonry details, wood framing and general arrangements.
- BSCE and Professional Engineer registration preferred but not required.
- Ability to travel throughout the Pacific Northwest. Some national and international travel may also be required.
- Experience estimating structural engineering and construction costs.

#### Position Responsibilities:

- Structural design for industrial, manufacturing, and utilities projects; including petrochemical, pulp & paper and power generation facilities.
- Ability to develop calculations and documentation packages, plans, sections and details for civil & structural design projects according to project standards and company standards.
- Familiar with detailing of structural steel, steel connection details, welds, concrete reinforcement, masonry, timber framing, foundations and basic architectural details. Ability to perform structural analysis and design. Ability to read shop drawings, existing civil/structural drawings, related mechanical and equipment drawings.
- Field support including on-site design, technical support and construction management.
- Participate in development of structural engineering estimates and capital cost estimates for engineering projects.
- Assist with proposal development, marketing, and business development efforts.

#### Company Information:

Parker, Messana & Associates is a consulting engineering firm located in Federal Way, Washington. We provide multi-discipline engineering study and design services to industrial and utility clients. Our projects cover a variety of industries including petrochemical, pulp & paper, wood products, power generation, food products and wastewater treatment.

This is a permanent, full-time position.

#### To Apply:

Email or mail resume to Thomas Messana. Contact information is as follows:

Thomas Messana  
909 S. 336th Street, Suite 201  
Federal Way, WA 98003  
(253) 926-0884  
[tmessana@pma-engr.com](mailto:tmessana@pma-engr.com)



### Civil Project Manager – Seattle Office

AHBL is seeking a Civil Project Manager in our growing Seattle office. Responsibilities will include project management and civil engineering design for public and private site development projects, road design, low impact development, Department of Defense and educational facilities. We are looking for a motivated self-starter with excellent oral and written communication skills as well as a solution oriented thinker with effective design and leadership skills.

Candidates must meet the following criteria to be eligible for an interview:

- Minimum of 10 years of industry civil design experience in Western Washington required with minimum 5 years in a supervisory role with client management experience in Western WA.

- Bachelors of Science or higher in Civil Engineering.
- Professional registration (P.E.) as a civil engineer.
- Strong civil consulting background with progressive pattern of increased responsibility.
- Has served as Project Manager for complex projects.
- Develop and manage schedules and budgets.
- Excellent writing/verbal communication skills.
- Excellent organization, operations, and business development skills.
- Has the ability to be a technical leader with the firm, and mentor to engineers
- Extensive knowledge of storm water modeling using WWHM, KCRIS and other software.
- Possesses the ability to produce construction documents using AutoCAD and Civil 3D.

Candidates should submit the following items:

- Cover letter,
- Resume,
- AHBL Application
- Salary history and,
- Brief list or narrative highlighting relevant experience the unique challenges associated with each local project.

We offer an excellent benefit package including insurance, 401(k) plan, and paid vacations/sick leave. Salary is based on experience.

Send complete submittal package to:

[careers@ahbl.com](mailto:careers@ahbl.com)

*AHBL is an Equal Opportunity Employer. We embrace diversity at all levels of our organization and we provide equal opportunity without regard to race, color, religion, sex, sexual orientation, age, national origin, genetic information, disability, or veteran status.*

---

See **Employment Notices** on page 6



### Civil Project Engineer – Tacoma Office

We are a local consulting firm seeking a Civil Project Engineer in our Tacoma office. Responsibilities will include civil engineering design, preparation of AutoCAD drawings and performing engineering calculations for site development public and private projects including; K-12 and Higher Educational Schools, Residential, Commercial, LAG Transportation, Health Care, and Federal Department of Defense projects.

The ideal civil candidates will have a BSCE, PE, and experience in public and private civil design including sustainability, grading, drainage, sanitary sewer, water distribution and roads. Familiarity with local development codes and requirements along with AutoCAD, and Civil 3D experience is preferred. .

Candidates must meet the following criteria to be eligible for an interview:

- 4-8 years of civil engineering design experience
- Washington State PE license required
- Experience with Land Development Projects
- Experience with AutoCAD and Civil 3D 2012

Candidates should submit the following items:

- Cover letter,
- Resume,
- AHBL Application
- Salary history and,
- Brief list or narrative highlighting relevant experience the unique challenges associated with each local project.

We offer an excellent benefit package including insurance, 401(k) plan, and paid vacations/sick leave. Salary is based on experience.

Send complete submittal package to: [careers@ahbl.com](mailto:careers@ahbl.com)

AHBL is an Equal Opportunity Employer. We embrace diversity at all levels of our organization and we provide equal opportunity without regard to race, color, religion, sex, sexual orientation, age, national origin, genetic information, disability, or veteran status.

### SURFACE WATER MANAGEMENT UTILITY DIRECTOR

Snohomish County, Washington

\$90,820 - \$128,339

For a complete job description, please visit the Prothman Company at <http://www.prothman.com/> and click on "Current Searches."

Snohomish County, Washington, is seeking a dynamic results-oriented leader as the Director of the Surface Water Management Utility Division (SWM) of the county's Public Works Department. SWM's division consists of a staff of 90 and a \$40 million annual budget. SWM uses innovative programs and cutting edge science, engineering, and habitat planning to address a wide variety of surface water related urban and rural issues, from the Cascade Mountains to the Puget Sound. SWM programs strive to improve the quality of life for Snohomish County residents by managing storm water, rivers, lakes, as well as being stewards of a sustainable environment for aquatic species and systems.

Snohomish County is located in northwest Washington State, twelve miles north of Seattle. The county rests between the sparkling waters of Puget Sound and the snow-capped peaks of the Cascade Mountains. The quality of life is heavily influenced by the spectacular scenery, and the county is a recreational mecca with a temperate climate that encourages year-round outdoor activities. With a population of approximately 717,000, it is one of the largest and fastest growing counties in Washington. Everett is the county's largest city and seat of county government, with a population of over 100,000.

The Public Works Department is divided into six divisions: Administrative Operations, Engineering Services, Road Maintenance,

Transportation and Environmental Services, Solid Waste, and Surface Water Management. The Surface Water Management Utility Division Director reports to the Public Works Department Director. SWM staff includes supervisors, planners, policy makers, engineers, scientists, technical staff, and financial and administrative personnel.

Graduation from a major college or university with major course work in civil or hydraulic engineering, hydrology, planning, or public administration; AND, five (5) years of management experience in storm water or utility operation; OR, any equivalent combination of training and/or experience that provides the required knowledge and abilities.

Snohomish County is an equal opportunity employer. First review: **September 20, 2015** (open until filled). To apply online, visit Prothman at <http://www.prothman.com/> and click on "Submit Your Application" and follow the directions provided. Application materials will only be accepted electronically via the website. For questions, please call 206-368-0050.



### Group Delta Consultants, Inc. Catastrophe Response Team

Group Delta is seeking licensed civil and structural engineers with strong professional experience in evaluation of earthquake damaged residential and commercial structures. Group Delta is building a forensic team with California experience and California licenses. If you have forensic experience evaluating structures, would like to perform earthquake damage evaluations, are interested in being a part of, and working with this team please contact Human Resources at Forensics-[HR@groupdelta.com](mailto:HR@groupdelta.com).

---

## ASCE Seattle Section Executive Board Minutes for May 13, 2015 Meeting

### Attendees:

Stefanie Herzstein  
Elizabeth Clark  
Evan Sheesley  
Jessica Aguilar  
Lisa Harbert  
Gene Gladden  
Kelli Dean  
Stan Russell  
Ann Albright  
Robbie Frankel

Meeting called to order at 4:35 pm by Stefanie. MOTION to approve agenda and passed unanimously.

MOTION to approve meeting minutes for April (as amended) and passed unanimously.

### Old Business

- Switching eRoom to Higher Logic. There was a webinar on April 27th to discuss features.
- Status of additional space

### New Business

#### Treasurer's Report

- Everything is tracking properly.
- Having trouble closing out Morgan Stanley account.
- Completing tax info by May 15th.
- MOTION to approve meeting report for April passed unanimously.

#### Membership Chair Report

- Based on the new membership information from the ASCE national database, 11 members have enrolled with the Seattle Section since April 2, 2015.
- As of May 5, 2015, the Seattle Section and Branches have 2,355 members an increase of 19 members since the beginning of April and 33 more than the same time last year.

### Standing Committees Report

- **Audit Committee:**
  - No updates.
- **Diversity Committee:**
  - The Diversity committee completed a group webinar entitled Employee Engagement & Recognition – What Really Works on May 5th at the HNTB Bellevue office. Four people attended. Diana provided National Diversity Council (NDC) with some con-

structive feedback about their website. The course content was solid and Kelli would recommend this training to others in the future.

- **House and Hospitality Committee:**
  - No Update
- **Legislative:**
  - No Update
- **PSEC:**
  - Past Activities
    - Everett Community College “Dinner with Industry” – April 9th
    - Highline Community College Mentor Night – April 21st – 15 mentors, 3 of which were ASCE members
  - Planned Activities
    - Bellevue College Mentor Night – May 6th – 10 mentor signups as of 5/4 with 4 ASCE Members
    - Inter Society Officer Workshop – May 9th
- **RH Thompson Scholarship Chair:**
  - Interviews for finalists May 23/24.
- **University Advisory Committee:**
  - Order of Engineer Ceremony.
    - When: Thursday, May 28th 12:30 to 1:30 pm
    - Where: Seattle University (Pigott 200)
    - Cost: \$15; either cash or check made payable to ‘Seattle University’ Deadline for payment: May 13th
  - May 7th @ 5:30 – this will be the SU student presentations; SU, BAN Science building 102.
  - May 13th – Award Ceremony for Student presentations prize money is awarded at the section meeting.
- **K-12:**
  - No updates.
- **Program Chair:**
  - No updates.
- **Professional Practice:**
  - No updates.
- **EWB Puget Sound Professionals:**
  - No updates.
- **Public Information Chair:**
  - No updates.
- **Community Service Chair:**
  - No updates.
- **History and Heritage:**
  - No updates.

See *May Minutes* on page 8

### Branch Reports and Action Items

- **North branch**
  - Meeting
    - Bi-monthly meeting is planned for Wednesday May 20th in Mt Vernon (5:45-8:30). The Trumpeter Public House – Gallery Room. Speaker will be Bob Barnard, PE, Washington Department of Fish and Wildlife who will present on Water Crossings and Revised Hydraulic Codes.
  - Action items:
    - None
- **Kitsap branch**
  - Last branch meeting of the year was May 12th. They do not plan to meet again until September.
  - Action items:
    - None
- **Boeing branch**
  - No update.
  - Action items:
    - None

### Technical Committees Reports and Action Items

- **Geotechnical group**
  - Lynn Salvati is now the new president. Please direct future communications to her at salvati@mcmjac.com.
  - The geotechnical group held a dinner meeting on April 16, 2015. Professors Timothy Stark of U. Illinois and Oldrich Hungr of U. British Columbia presented their research, analyses and conclusions regarding the failure mechanism and runout mechanics of the Oso (SR530) landslide. We had 150 attendees at that meeting.
  - We held our spring short course on May 1, 2015. The topic was Soil Liquefaction during Earthquakes – Recent Developments. This was an all-day short course taught by Professors Ross Boulanger, Ed Idriss, and Jason DeJong of UC Davis. We had 120 attendees.
  - We held our annual Spring Seminar on May 2, 2015. The topic was Geotechnical Earthquake Engineering. The seminar featured 8 presentations on research, case histories, and emerging technologies on this subject. We had 20 vendor displays in the reception area and 210 attendees.
  - The spring seminar marks the end of our 2014-15 season. By all accounts we had a successful season and look forward to a successful 2015-16 season.

We will hold our planning and vision meeting in May or June to lay the groundwork for next year.

### • **Ports and Harbors**

- This month we are pleased to welcome Steve Brannon, CEO of American Construction. Steve has over 40 years of contract and bidding experience and will be providing a review of commonly observed items within contract bid documents which produce problems for contractors.
  - Also, in addition to our longstanding affiliation with ASCE Seattle Section as a subcommittee, we are in the process of evaluating the merits of joining COPRI. We would essentially hold dual membership and stand to gain exposure and/or interesting speakers through that new connection. Shannon Kinsella has been at the head of moving this process forward, including assembling some draft paperwork and addressing our group at the last meeting. If you are interested in joining the conversation or simply want more information, contact the group.
  - We will be meeting at our usual spot (third Thursday) on the 10th floor of Mirabella Seattle overlooking South Lake Union, with bar service and a dinner buffet prepared by Mirabella's chef -- a reminder that there is ample street parking north of the building. \$40 for general admission; \$20 for students and free agents. Early registration ends on Sunday the 17th, after which time the GA price jumps to \$45. Online registration closes night before the event -- please contact Jon to get on the list.
- **Structural Committee/ SEAW**
    - They are holding elections and may be organizing teams or individuals to preform Post-Earthquake Disaster Safety Evaluations of Buildings in Nepal.
  - **Urban Development & Transportation:**
    - Nothing new to report.
  - **Water Resources**
    - Monthly meeting:
      - When: May 21, 12:00 - 1:00 p.m.
      - Where: HDR's Bellevue Office, 500 108th Ave NE, Suite 1200 (Map)
      - Title: The Barton CSO Project - Using Green Stormwater Infrastructure and Deep UIC Screen Wells to reduce Combined Sewer Overflows
      - Abstract: When the Barton Combined Sewer Overflow (CSO) Project was launched in Janu-

See *May Minutes* on page 9



---

## May Minutes (continued from page 8)

ary 2011, King County selected the retrofit of bioretention cells in a residential neighborhood for CSO control. The presentation will cover the evolution of the project from inception to construction, from shallow infiltration to deep infiltration. We will discuss the many challenges and how they were overcome to be the first successful GSI retrofit project that used deep infiltration screen wells to manage the stormwater for CSO control in a project area with poorly infiltrative soils.

- Speakers: Mary Wohleb (King County Wastewater Treatment Division), Steve Burke (SvR Design), and Kathy Gwilym (SvR Design)

### • Sustainability

- The Sustainability Committee hosted a tour at Century Link Field on Friday, May 1. It was a great tour. They also had a meeting in Seattle on April 13th to put together a presentation group for Envision. They may be putting another tour together for the Seawall project.

## YMF

### • Past Events

- April 6 - Networking (Bellevue) [11 YMs]: A solid contingent of local YMF members gathered at the Tap House in Bellevue to catch up and enjoy some great brews and appetizers. Several first-time attendees joined us and an excellent time was had by all.
- April 9 - SWE - Dinner with Industry [2 YMs, 100 volunteers, 200 students]: "Dinner with Industry" hosted by Everett Community College, was organized by their student section of SWE. This was a one-on-one mentor night. This event was open to all engineering disciplines and both men and women. The purpose of this dinner was to have students learn, ask questions and get excited about engineering. These bright and enterprising students benefited from having the engineering mentors share their experience and opportunities within engineering
- April 14 - Networking (Seattle) [15 YMs]: YMFs gathered at John John's Play Room on Capitol Hill for some conversation, arcade games, and some appetizers and drinks. It was a good opportunity to meet some YMFers and network with other fellow engineers. Appetizers were provided courtesy of ASCE. Pin ball and arcade games were played. John John's is in the Capitol Hill neighborhood on the

corner of Melrose Ave and E Olive Way.

- April 21 - PSEC Mentor Night - Highline Community College [1 YM]: This Mentor Night, co-sponsored by the Puget Sound Engineering Council (PSEC) and Highline College gave engineering students (freshmen, sophomores, & occasionally high school students) an opportunity to ask questions in person from a variety of practicing engineers, engineering alumni, and faculty about the wide spectrum of engineering disciplines, professions, career pathways, continuing education post-graduation, professional registration considerations, professional engineering organizations, responsibilities, and ethics over food and refreshments.
- April 25 - Community Service Event - Rebuilding Together [10 YMs]: On April 25, 2015, ASCE member volunteers teamed with employees of the law office of Wilson Sonsini Goodrich & Rosati to take part in Rebuilding Together Seattle's Spring Rebuilding Day. The activities on this nationwide day of service provide much-needed upgrades to local homes and nonprofit facilities, with 25 projects in the Seattle area alone. This year's project benefited an elderly couple, residents of a home in Burien. Volunteers were able to complete yard work, replace windows and light fixtures, build a deck, and make other safety and ergonomic improvements. The event was from 8 am to 4 pm with some volunteers working in shifts.

### • Upcoming Events

- March 30 - June 21 - ASCE Soccer Team - Spring Season
- May 1 - Sustainability Committee - Tour of Century Link Field
- May 4 - Networking (Bellevue) and Officers' Meeting
- May 6 - PSEC Mentor Night - Bellevue College
- May 8 - University of Washington ASCE Spring Social
- May 14 - YMF Late Spring Picnic • May 15 - Networking (Seattle) and Mariner's Game
- May 21 - Tyee Educational Complex - College & Career Fair
- May 23 - Engineering Rocks! 2015
- May 29 - 1st Annual Executive Forum
- May 31 - ASCE Hiking
- June 4 - PACTRANS Regional Transportation Seminar

See [May Minutes](#) on page 10

- Committee Activities

- Putting together an executive panel presentation.

- Action Items

- We are starting to use our US Bank account. Money is transferred.
- We are looking into options for earning more interest on our savings so we can provide more scholarships in the future. We talked with Pete from National. We can invest in stocks and bonds if we want. National has a 50:50 mix between stocks and bonds. They don't want to invest for us as they don't want to be in the middle. If we wanted to invest in stocks we would need to do it with the Seattle Section tax ID number; we would need to make sure we got we got a separate account number to keep track of the funds separately. If we want to invest our scholarship money Pete can help choose funds through Morningstar. Nothing has been decided.
- The YMF scholarship deadline was March 31. We have selected 1 (\$1000) grand prize winner and 2 (\$500) honorary mentions for this year. All three will be invited to the section dinner.

- North Branch was to be invited to the forum and the mariner's game.
- UW faculty advisor has not been inviting students to the student presentations competition; All of the scholarship recipients are from SU. Discussed process for improving communication in the future.

New Business

- Post Disaster Program / RCW
- Update on nominations
- Joint coordination meeting with ITE, WTS, ITS, etc. in the summer
- Coordination with Master Builders - Lisa

Miscellaneous

Presentation by UW students to request money to go to National Concrete Canoe completion. Board decided to fund \$1,000 with the option for coming back at a future meeting to request more if other fundraising is not effective.

Next board meeting will be June 10.

Meeting called to a close at 5:50 pm.