



# SEATTLE SECTION NEWSLETTER

February 2015  
Volume 50 No. 6

## Section Officers

October 1, 2014 – September 30, 2015

### SEATTLE SECTION OFFICERS

Stefanie Herzstein, *President* 425-896-5219  
Evan Sheesley, *President-Elect* 206-859-0224  
Elizabeth Korb, *Secretary* 206-331-1176  
Gene Gladden, *Treasurer* 425-281-7288  
Perry Cole, *Immediate Past President* 425-471-9022  
Jessica Aguilar, *Director (2015)* 206-357-5625  
Lisa Harbert, *Director (2016)* 206-371-3079  
Amanda Shellenberger, *Director (2017)* 206-903-3371

### YMF OFFICERS

Courtney Davis, *President* 206-926-0451  
Cal Bearman, *President-Elect* 206-764-5253  
Don Nguyen, *Secretary* 203-216-3933  
Tara Burton, *Treasurer* 425-406-7118  
Elizabeth Clark, *Board Representative* 425-468-1507

### UW/SEATTLE U CONTACTS

Amy Riley, *University Advisory Committee Chair*  
[amy.riley@seattleu.gov](mailto:amy.riley@seattleu.gov)

### KITSAP BRANCH OFFICERS

David Dinkuhn, *President* 360-850-5319

### NORTH BRANCH OFFICERS

Gabe Ng, *President* 206-718-5252

### BOEING BRANCH OFFICER

Vinny Avendano, *President*  
[vinicio.p.avendano@boeing.com](mailto:vinicio.p.avendano@boeing.com)

### WEBMASTER

Eric Knigge  
[seattleasce@yahoo.com](mailto:seattleasce@yahoo.com)

## ASCE Seattle Section and Geotechnical Group Joint Meeting

Thursday, February 26, 2015

**Place:** Best Western Executive Inn  
200 Taylor Avenue North, Seattle, WA 98109

**Cost:** Advance Registration:  
\$40 General Admission  
\$20 for non-reimbursed public agency employees, unemployed members, and students.  
**(Advance Registration Rates apply until 4:00 pm, Friday, February 20.)**

After February 20 and at the door:  
\$45 General Admission  
\$20 for non-reimbursed public agency employees, unemployed members, and students

**Meal:** Salmon with Lemon Dill Crème Sauce -or- Teriyaki Stir Fry (vegetarian)

5:30 Social  
6:30 Dinner  
7:30 Program

**[Click here to register.](#)**

For assistance with online registration, please contact Tyler Stephens at [rsvp@seattlegeotech.org](mailto:rsvp@seattlegeotech.org)

Direct questions or comments regarding meetings to Section President Stefanie Herzstein at [seattleascepresident@gmail.com](mailto:seattleascepresident@gmail.com)

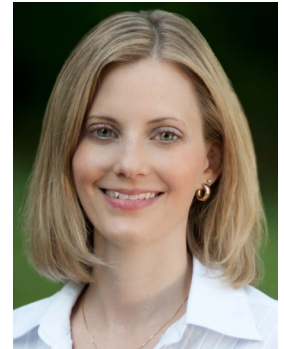
## Program — Recent Advances and Innovations in Optical Geo-Characterization

*Roman D. Hryciw, Professor of Civil Engineering at the University of Michigan*

With exponential increases in digital camera resolution, the last 10 years have witnessed major advances in the use of image analysis in geotechnical engineering. This presentation highlights the history of photography and image analysis in geotechnical engineering. It describes a database of over 100 references describing the use of image analysis in four geotechnical areas: site characterization; earth mass characterization; particle characterization; motion and deformation. The presentation then focuses on development of image analysis systems for particle size and shape characterization at the University of Michigan. These include the Translucent Segregation Table (TST), Sedimaging, the Vision Cone Penetrometer (VisCPT), Stereophotography, Optical Flow and Digital Microphotography.

## President's Column

By Stefanie R. Herzstein, P.E., PTOE, M.ASCE, Seattle Section President



Happy New Year! As we begin the year, it is a good time to reflect on our achievements over the last year and remember to recognize our colleagues.

First, I want to congratulate five of our fellow Seattle Section members on winning Puget Sound Engineering Council Awards – Prof. Gregory R. Miller, Ph.D., M.ASCE.; Cindy M. Hirsch, P.E., M.ASCE; Ron Klemencic, P.E., S.E., Hon. AIA, M.ASCE; Cal Bearman, P.E., M.ASCE; and Erin Slayton, P.E., M.ASCE.

These winners will be honored at the Engineer's Award Banquet on February 14. (See page 11 in this newsletter for more detail.)

Next, I want to encourage you to nominate yourself, colleagues, and projects for one of the many ASCE awards. There are 85 Society Awards that recognize civil engineers who advance the profession either through achievement or published papers. A wide array of honors, several including cash prizes, exist to award students, younger members, career professionals, projects, authors of ASCE-published papers, and researchers/educators. The Society needs your participation in this important activity. Please consider supporting your colleagues, employees, and students by nominating them for one or more of the Society Awards. You can find out more about the Society Awards at [www.asce.org/award\\_deadlines/](http://www.asce.org/award_deadlines/).

The Seattle Section also honors members through the Local Outstanding Civil Engineering Achievement (LOCEA) Awards. This awards program recognizes projects that have improved the quality of life and contributed to the economic development of the local community, area, or region. These projects represent the successful combination of multiple engineering objectives, including design innovation and excellence, environmental sustainability, cost effectiveness, the effective use of materials, and aesthetics. Information on the LOCEA Awards will be posted on the Seattle Section website at [www.seattleasce.org/awards/awards.php](http://www.seattleasce.org/awards/awards.php) with a deadline of mid-March.

Region 8 also has its own awards to recognize projects and engineers. To learn more about Region 8 awards please contact me at [seattleascepresident@gmail.com](mailto:seattleascepresident@gmail.com).

The next newsletter deadline is:  
5:00 p.m.  
Friday, February 20, 2015

~~~~~

Newsletter Editor:  
**Todd Crandell**  
[seattleASCEnews@gmail.com](mailto:seattleASCEnews@gmail.com)  
Phone: (206) 459-2250

### CHANGE OF ADDRESS:

All changes to your address (including your newsletter e-mail address) should be provided to ASCE at [www.asce.org](http://www.asce.org) or: 1801 Alexander Bell Drive, Reston, VA 20191-4400.

The Seattle Section will receive your updated information from ASCE.

**AMERICAN SOCIETY OF CIVIL ENGINEERS, SEATTLE SECTION**  
<http://www.seattleasce.org>

Volume 50 No. 6, February 2015  
Published 10 times a year

### ASCE SEATTLE SECTION NEWSLETTER ADVERTISING RATES

#### Employment Ads:

\$75 for one month on web site and in the newsletter; \$50 per month for subsequent months

#### Display Ads:

Costs are for one year (10 issues):  
Business Card size           \$100  
Quarter page                   \$250  
Half Page                       \$500  
Full Page                        \$1,000

To place an ad or for more information, contact the editor at [seattleASCEnews@gmail.com](mailto:seattleASCEnews@gmail.com).

---

## Employment Notice

To post an employment notice in the newsletter and on the Section's web site, please contact the [newsletter editor](#) in advance of the monthly deadline (the 20th of the month). Rates for advertising are shown on page 2.

---



### Environmental Scientist

Minimum Salary: **\$5,690.00 per month**

Maximum Salary: **\$7,681.00 per month**

Posted Date: **January 16, 2015**

**Open until filled.** (Open to current employees and the general public.)

To apply for this position, please go to [www.redmond.gov/jobs](http://www.redmond.gov/jobs).

**Preference given to applications received by February 6, 2015.**

The City of Redmond is in search of an accomplished and innovative individual who shares the City's commitment and passion for the environment to join our team. This position resides in the Engineering Section of the Natural Resources Division. This position is responsible for implementation of our stormwater infiltration retrofit program, and managing the land use and project review element of the City's Wellhead Protection Program. These efforts require a strong technical groundwater background including fate and transport and field experience, as well as project/program management skills to address complex issues with multiple stakeholders. The successful applicant must be able to make independent decisions in the context of City policy and other City interests, communicate with field staff, residents, business owners, coworkers and management, and participate effectively on various types of project teams. This position will work in partnership with the other staff to support the Division's vision to support our vibrant urban community while providing a lasting natural legacy.

#### Duties:

This position serves as an environmental scientist responsible for the review of groundwater resource impacts due to

private and public development projects. Duties include, but are not limited to the following:

Stormwater Infiltration Assessment and Modification – Evaluate the need for stormwater infiltration system modifications or implementation of best management practices to reduce risk to groundwater at approximately 100 sites. Manage the program to assist private property owners through assessment, modification, permitting, and reimbursement of retrofits. Evaluate treatment technologies, including low impact development techniques, for use in infiltration retrofits in relation to feasibility, effectiveness, cost, and maintainability. Coordinate with stormwater engineers and the Planning Department on policies and processes.

Land use Review – Coordinate with Development Services to review land use, coordinated civil plans, and Building, Fire and Public Works permits located in the Critical Aquifer Recharge Area (CARA). Provide comments on private construction projects regarding technical pollution prevention and sustainability best management practices to protect the City's groundwater resources. Apply broad knowledge of scientific principles and practices to review of construction plans. Interpret and apply code and regulations to protect groundwater resources. Implement policies and standards for the protection and management of groundwater resources as it relates to land use in a team-focused environment. Coordinate with long range planning to develop policies to sustain groundwater quantity and quality. Fulfill public records requests and provide environmental data to developers and consultants in preparation of Critical Area Reports and Dewatering Plans.

Capital Improvement and Site Assessment Support – Provide technical expertise as part of Capital project teams to evaluate impacts of capital projects and programs on groundwater resources. Support Building and Fire staff on permit review of USTs, ASTs, generators, second-

ary containment, and other hazardous materials related issues. Support City property acquisitions by evaluating Phase I and II Environmental Site Assessments. Assist in the development of policies that ensure protection of groundwater resources while balancing the City's vision of two urban centers and a vibrant community.

#### Qualifications:

Knowledge of: pollution control and prevention BMPs, stormwater treatment BMPs, environmental chemistry (fate and transport) and pollution sources, hazardous waste management, stormwater, groundwater, and drinking water laws, codes, policies and procedures; DOE SWMMWW requirements, GIS, and low impact development design and construction techniques.

Ability to: read construction drawings; communicate effectively, both verbally and in writing; work independently and as part of a team; problem-solve by identifying multiple solutions; organize and prioritize workload and projects; interpret and apply codes and regulations; and use personal computer and software. Positively interact with City Council and staff, contractors, businesses, public agencies, citizens and other jurisdictions to exchange information, coordinate projects, and resolve issues, effectively collaborate between various city functional groups to help realize city and division mission, provide critical feedback to consultants and other team members, work as part of a team, explain technical issues to non-technical audience and embody the City Values of Commitment to Service, Integrity, and Accountability.

#### Education and Experience:

Any combination equivalent to: Bachelor of Science degree in geology or other equivalent science field and seven (7) years increasingly responsible experience. Professional Geologist (LG) license preferred. Current HAZWOPER certification preferred. Field inspection, environmental

See **Employment Notice** on page 4

**Employment Notice** (continued from page 3)

sites assessment and prior plan review experience preferred.

**Licenses and Requirements:**

Valid Washington State driver's license required by date of hire with a driving record that meets City standards.

**Union Affiliation:**

Fulfillment of bargaining unit membership is required within 30 days of hire.

**Working Conditions:**

Work is performed primarily in an office environment with fieldwork required to review projects. May be exposed to physical hazard from traffic or construction equipment during on-site inspection.

**Benefits:**

The City of Redmond offers an excellent benefits package including: flexible work hours; medical, dental and vision benefits; paid sick leave, vacation and holidays; life insurance; retirement; and career development including tuition reimbursement.

**City of Redmond Values:**

**Integrity:** We demonstrate sound, honest, truthful and consistent actions.

**Accountability:** We take ownership of our actions and responsibilities.

**Commitment to Service:** We are dedicated to seeking solutions for our community.

**Selection Process:**

The City is accepting applications from internal and external applicants. **Please include a resume and cover letter with your application, and be sure to list all relevant training and certifications. This position is open until filled but preference will be given to applications received by February 6, 2015.**

The City may review existing application pools to fill this position, or use this pool to fill future vacancies.

Top candidates will be contacted to participate in the next phase of selection, which may include testing and/or an interview. Candidates who are selected to interview will be required to complete a Background Authorization form to have a

thorough background investigation conducted.



**Civil Project Engineer – Seattle Office**

We are a local consulting firm seeking a **Civil Project Engineer** in our Seattle office. Responsibilities will include assisting with civil engineering design, preparation of AutoCAD drawings and performing supporting engineering calculations for site development including; grading, drainage, sanitary sewer, water and other related improvements.

The ideal candidates will have a BSCE and EIT and experience in public and private civil engineering design along with a working knowledge of AutoCAD and Civil 3D software.

Candidates must meet the following criteria to be eligible for an interview:

- Entry level to three years of civil engineering design experience in the Pacific Northwest
- EIT
- Experience with AutoCAD and Civil 3D

Candidates should submit the following items:

- Cover letter,
- Resume,
- AHBL Application
- Salary history and,
- Brief list or narrative highlighting relevant experience the unique challenges associated with each local project.

We offer an excellent benefit package including insurance, 401(k) plan, and paid vacations/sick leave. Salary is based on experience.

Send complete submittal package to:

[careers@ahbl.com](mailto:careers@ahbl.com)

*AHBL is an Equal Opportunity Employer. We embrace diversity at all levels of our organization and we provide equal opportunity without regard to race, color, religion, sex, sexual orientation, age, national origin, genet-*

*ic information, disability, or veteran status.*



**Civil Project Engineer – Tacoma Office**

We are a local consulting firm seeking a **Civil Project Engineer** in our Tacoma office. Responsibilities will include civil engineering design, preparation of AutoCAD drawings and performing engineering calculations for site development public and private projects including; K-12 and Higher Educational Schools, Residential, Commercial, LAG Transportation, Health Care, and Federal Department of Defense projects.

The ideal civil candidates will have a BSCE, PE, and experience in public and private civil design including sustainability, grading, drainage, sanitary sewer, water distribution and roads. Familiarity with local development codes and requirements along with AutoCAD, and Civil 3D experience is preferred. .

Candidates must meet the following criteria to be eligible for an interview:

- 5-8 years of civil engineering design experience
- Washington State PE license required
- Experience with Land Development Projects
- Experience with AutoCAD and Civil 3D 2012

Candidates should submit the following items:

- Cover letter,
- Resume,
- AHBL Application
- Salary history and,
- Brief list or narrative highlighting relevant experience the unique challenges associated with each local project.

We offer an excellent benefit package including insurance, 401(k) plan, and paid vacations/sick leave. Salary is based on experience.

**See Employment Notice on page 5**

---

**Employment Notice** (continued from page 4)

Send complete submittal package to: [careers@ahbl.com](mailto:careers@ahbl.com)

AHBL is an Equal Opportunity Employer. We embrace diversity at all levels of our organization and we provide equal opportunity without regard to race, color, religion, sex, sexual orientation, age, national origin, genetic information, disability, or veteran status.



### Structural Engineers

#### Company Information

REID MIDDLETON, INC., is a civil and structural engineering firm with a 60-year history of service to public and private clients throughout the Pacific Rim, including Hawaii and Alaska. We are headquartered in Everett, Washington with additional offices in Spokane, WA; San Diego, CA; Anchorage, AK; and Honolulu, HI. We have a culture of hard working and highly motivated people who are committed to each other's success. We believe in flexible work schedules, celebrating our successes, and enjoying our time away from work.

Our firm's market-focused organization includes a diverse portfolio of Aviation, Civic/Municipal, Commercial, Education, Healthcare, Industrial, Military, Transportation, and Waterfront projects. Please refer to [www.reidmiddleton.com](http://www.reidmiddleton.com) for more information about our portfolio.

#### Everett, WA - Job Description, Entry Level Engineers, Structural Engineering

The steady growth of our structural engineering practice has created opportunities for challenging design, professional development, and professional growth in our Everett, WA, office. Our north-end location offers an easier, more convenient and affordable lifestyle than found in other Puget Sound urban communities.

We are looking for two highly qualified and motivated entry-level engineers (Designers) to join our structural engineering team.

Requirements for this position include the following:

- Bachelor's Degree in Civil or Structural Engineering.
- Licensing as an Engineer-In-Training.
- Knowledge of AutoCAD and Microsoft Office software.
- Master's Degree in Structural Engineering (preferred).
- Experience with structural analyses and design software such as Visual Analyses, ETABS, SAP, SAFE, Perform 3D, and Revit Building Information Modeling (BIM) software (preferred).

The successful candidate must possess excellent interpersonal and communication skills and the ability to participate within a team of engineers and drafters to engage in structural analysis and design of structural systems in concrete, wood, masonry, and steel.

The candidate must have the ability to work collaboratively in a team environment and the ability to work independently as well. We are looking for problem solvers.

To apply for this position, send a cover letter and resume to [jobs@reidmiddleton.com](mailto:jobs@reidmiddleton.com). To learn more about us, visit our website at [www.reidmiddleton.com](http://www.reidmiddleton.com). We are also on Facebook and LinkedIn; links to these sites and our Reid Our Blog are on the home page of our website.

Reid Middleton is a federal contractor subject to the requirements of the Vietnam Era Veterans Readjustment Assistance Act (VEVRAA).

*EOE/Minorities/Females/Veterans/Disabled*

---

### COWI Marine North America

#### Senior Structural/Project Engineer

COWI Marine North America (formerly Ben C. Gerwick, Inc. and Ocean & Coastal Consultants) is seeking a talented and motivated Structural engineer with 10-15 years' experience to join our team in the Seattle Office. This position offers extensive opportunities for career growth.

#### Role Summary

The incumbent provides leadership and expertise in engineering design and analysis of foundations and structures for marine and transportation projects.

Key Responsibilities include but are not limited to:

- Works collaboratively and cross-functionally with senior practitioners and project managers in major projects by providing engineering expertise;
- Serves as a liaison and point of contact for contractors, clients, agencies, and developers;
- Researches and reviews design options for both technical and financial impact;
- Supervises, coordinates, and reviews the work of other structural engineers;
- Works collaboratively with CAD technicians and other functions;
- Contributes to the successful completion of projects in area of responsibility;
- Leads projects from initial concept, through the planning process to implementation;
- Prepares work plans, schedules, and budgets;
- Leads project team in structural analysis, design, evaluation and preparation of calculations and drawings;
- Ensures conformance to all applicable standards and codes and Company policies/procedures;
- Conduct sites visits during construction and prepares associated observation report as required.
- Works closely with other disciplines to ensure coordinated designs
- Oversees the preparation of standard documents and technical reports, such as technical specifications, structural calculations, requisitions and estimates;
- Prepares work plans, schedules, and budgets;
- Provides leadership to and effectively mentors other engineers to ensure the team's professional development;
- Actively participates in business development pursuits and contributes to proposal preparation; and
- Performs other duties as required.

See **Employment Notice** on page 6

**Qualifications and Skills Required:**

- MS degree or higher in Structural Engineering
- Minimum 10 years of previous related experience with a focus on marine structures
- Proven track record of success in managing projects from concept design through construction
- Previous experience across multiple disciplines including geotechnical, structural, tunnel, coastal engineering and experience dealing with contractors, cost estimating, project coordination and development of construction and tender packages
- Washington PE registration and on an SE track
- Proven ability to produce reports of findings
- Experience working with North American marine structural engineering design codes
- Experience with waterfront structures (piers, wharves, seawalls, etc.), bridges, soil-structure interaction, seismic analysis, and structural design.
- In-depth experience with relevant structural analysis and design software (SAP, XTRACT, MicroStation, LPile, MathCAD, AutoCAD, etc.).
- Superior decision making ability
- Collaborative work and leadership style with a proven ability to manage and mentor a team
- Strong written and verbal communication skills including the proficient use of Office tools (Word, Excel, and Power Point)
- Ability to effectively manage budget and schedule delivery
- Superior planning, organizational and time management skills
- Legal ability to work in the US
- Ability and willingness to travel up to 25% of the time
- Ability and willingness to work with staff located remotely

**Qualifications and Skills Preferred**

- SE designation
- Previous experience in design-bid-

build, design-build, constructability review and value engineering

- Familiarity with Washington geology and seismology

**Application procedure:**

If you are interested in the above mentioned position, please submit a resume and cover letter to [careers@cowi.com](mailto:careers@cowi.com) quoting **SBE 148-04** in the subject line and indicating your preferred office location. If your interest and qualifications meet the requirements of the position, you will be contacted directly by a member of the HR Department. Please note that due to the volume of applications received, we are unable to get back to each candidate individually about the status of his or her application.

COWI North America is an Equal Opportunity Employer.



**Structural Project Engineer**

KPFF Portland is looking for motivated Structural Engineers interested in opportunity for growth.

KPFF is about freedom. Freedom to work on what inspires you. Our engineers work on a vast spectrum of engineering projects: from dog houses (seriously) to skyscrapers. We work in locations around the globe: from the lobby of our building to Abu Dhabi. We have all the benefits of a large, stable firm but none of the red tape that comes with it. We're large but nimble and operate day-to-day with the flexibility of a small firm. Providing first-class service to our clients is what we're all about. KPFF is experiencing solid growth and continues to innovate that growth to better serve our clients. Most recently we implemented a new Special Inspections division to offer more individualized client services. We are a group of dedicated, friendly, collaborative, hard-working engineers and we are looking for exceptional engineers to join us. If this sounds like an environment you could thrive in, please read on.

**Position**

Structural Project Engineer

**Position Summary**

As a Structural Project Engineer, you will work individually and collaboratively in the design and construction process for a wide array of challenging projects. You will work closely with talented engineers, BIM / CAD technicians, architects, project managers, contractors and client teams.

Our current projects include:

- Airports
- Arenas + Stadiums
- Long-Span Structures
- Bridges
- Government Facilities + Embassies
- Commercial Developments
- High-Rise Structures
- Mixed-Use Developments
- Corporate Campuses
- Healthcare + Medical Facilities
- Education Facilities (K-12 + Higher Ed)
- Museum + Convention Centers

**Apply**

KPFF would like to hear from you. Please follow this link to apply:

<http://ow.ly/InFVJ>

KPFF is an equal opportunity employer.

**Location**

Portland, OR



**Geotechnical Engineer - Entry to Mid-Level**

PanGEO Geotechnical Consultants, with a staff of 10 engineers and 4 engineering geologists, is seeking entry level to mid-level geotechnical engineers looking for growth opportunities with a progressive firm providing services in the public and private sectors for projects including roadways, bridges, waterfront facilities, wastewater facilities, and private sector mixed use development to residential development. Ideally, candidates would have a master's degree and PE registration. Duties would include field explorations, geotechnical analyses, report writing, and construction support services.

Please forward resumes to [stan@pangeoinc.com](mailto:stan@pangeoinc.com)

---

## ASCE Seattle Section Executive Board Minutes for December 10, 2014 Meeting

### Attendees:

Perry Cole  
Liz Korb  
Stefanie Herzstein  
Elizabeth Clark  
Jessica Aguilar  
Evan Sheesley (phone)  
Kelly Dean  
Gene Gladden  
Veronica Vong  
Cliff Williams

Meeting called to order at 4:31 pm by Stefanie. MOTION to approve agenda and passed unanimously.

MOTION to approve meeting minutes for November and passed unanimously with two amendments.

### Old Business

- PSEC nominations - committee voted
  - Academic - Prof. Gregory Miller - Civil and Environmental Engineering Dept. chair at UW
  - Government - Cindy Hirsh - FAA
  - Professional - Ron Klemencic - MKA Structural Engineers CEO

### New Business

#### Treasurer's Report

- Covers both October and November.
- MOTION to approve meeting report for October and passed unanimously with one amendment to the date.
- Majority of money recently is from dues and allotment. Need to determine better method for tracking source of incoming money.
- Current bank cannot accept cash payments.
- Need to update information at bank and payment sources with current board data.
- Hold off until next meeting to approve meeting report for November.
- Gene will send out money request form.

#### Membership Chair Report

- The Section and Branches have 2,425 members (12 new).
- Membership database found that there was an error and were several duplicate member names. This will be rectified soon but will affect membership renewal race standings.

### Standing Committees Report

- **Audit Committee:**
  - No updates.
- **Diversity Committee:**
  - Diversity committee Seattle section received data from ASCE National on member diversity.
  - The committee has started discussions on a mentoring program for high school students with an interest in Engineering. Immigrant engineers that were educated outside of the US have contacted ASCE and committee is trying to determine best methods to use census data.
  - Want to focus on high school outreach and work with YMF or K-12 committee.
- **House and Hospitality Committee:**
  - House and Hospitality would like more coordination with Todd regarding the website event and dinner emails and registration page.
  - Speakers have not been being registered the last few meetings.
  - Early bird registration times may be updated.
  - Maybe combine student presentation and life member event for May.
  - People who register but do not show should still be charged. To be discussed in more detail.
- **Legislative:**
  - Sent out invitation for upcoming phone call on future events.
- **PSEC:**
  - Planned Activities
    - Engineer of the Year Awards - Nominations committee selections will be completed and the Board (Stefanie) will be informed of the committees voting by December 5th and all nominees will be contacted for entry submittals by the 10th
    - Mentor Night at Seattle Central College on January 15th - Details in newsletter.
    - PSEC Fair is February 7, 2015.
- **RH Thompson Scholarship Chair:**
  - No updates.
- **University Advisory Committee:**
  - No updates.
- **K-12:**
  - No updates.

See [December Minutes](#) on page 8

- **Program Chair:**
  - Potentially a joint lunch with ITE in April.
- **Professional Practice:**
  - No updates.
- **EWB Puget Sound Professionals:**
  - No updates.
- **Public Information Chair:**
  - No updates.
- **Community Service Chair:**
  - Asking YMF to help with the community service event for YMF and the Section. The \$100 in the budget would go to the Adopt a Road event in the spring.
  - Asked YMF to invite the section to YMF community service events through the newsletter.
- **History and Heritage:**
  - No updates.

### Branch Reports and Action Items

- **North branch**
  - Next branch meeting: January 21, 2015 (Third Wednesday) in Mt. Vernon
  - North Branch Officers– Elected November 19, 2014
    - Gabe Ng, P.E., M.ASCE, Branch President  
Amorterra, P.O. Box 1253, Bellingham, WA 98227  
(360) 393-5289, gng@amorterra.com
    - John R. Tuttle, P.E., M.ASCE, Branch Past President  
Tuttle Engineering and Management,  
275 West Rio Vista Avenue Suite 1,  
Burlington, WA 98233  
(360) 899-5953, jtuttle@tuttle-team.com
    - John R. Gaffney, P.E., M.ASCE, Branch President Elect  
Anchor QEA, 1605 Cornwall Avenue,  
Bellingham, WA 98225,  
(360) 715-2705, jgaffney@anchorqea.com
    - Melissa Gehrman, P.E., M.ASCE, Branch Secretary  
Whatcom County Public Works, 322 North Commercial Street, Bellingham, WA 98225,  
(360) 715-7450,  
mgehrman@co.whatcom.wa.com
    - Melissa Gehrman, P.E., M.ASCE, Branch Treasurer  
Whatcom County Public Works, 322 North Commercial Street, Bellingham, WA 98225,  
(360) 715-7450,

mgehrman@co.whatcom.wa.com  
○ Jennifer Allen, P.E., Seattle North Branch YMF Chair  
Anchor QEA, 1605 Cornwall Avenue,  
Bellingham, WA 98225,  
(360) 733-4312, jallen@anchorqea.com

- ACTION ITEMS/REQUESTS:
  - Gabe Ng would like the contact information for the presentation on the Oso Landslide that was given at the Seattle Section meeting and would like to repeat that presentation.
  - Want to know where the North Branch members can register for the Annual Conference?

- **Kitsap branch**

- Next meeting December 9th, at 6pm at Aspect Consulting on Bainbridge Island
- ACTION ITEMS
  - None

- **Boeing branch**

- Both Jose Ramos (Executive Focal) and Kenneth DeBord (Treasurer) emails to their Boeing email addresses came back undeliverable. Other addresses were ok.

### Technical Committees Reports and Action Items

- **Geotechnical group**

- We held a dinner meeting on 20 November 2014 at the Best Western in Seattle. John Kvinsland of Malcolm Drilling presented the Block 43 development project in the South Lake Union District. We had about 50 attendees.
- We are having a dinner meeting 18 December at the Red Lion in Bellevue. Ben Upsall of Hart Crowser and Tripp Howard of KPFF Consulting Engineers will be presenting the design of the SR 520 floating bridge deep-water pontoon mooring anchors.
- We will have a dinner meeting 22 January at the Best Western in Seattle. Topic undecided at this point.

- **Ports and Harbors**

- Nov- Joint meeting with Section –the speaker was David B. Williams (info per web posting). 74 in attendance.
- Dec- N/A
- Jan- TBD

See **December Minutes** on page 9



---

**December Minutes** (continued from page 8)

- **Structural Committee/ SEAW**
  - Nothing to report.
- **Urban Development & Transportation:**
  - They are co-hosting tonight's dinner on Transportation Funding.
- **Water Resources**
  - Last month we had 20 people attend our meeting in Bellevue. The speaker was Mike (Rocky) Hrachovec with Natural Systems Design and his presentation was: Floodplain Restoration in an Urban Setting- Engineering challenges of Seattle's Thornton Creek Confluence project
  - We have a number of speakers lined up for next year but haven't picked one for January yet
- **Sustainability**
  - We had a meeting on Nov 17th at Paladino. Patrick Leonard discussing possible things that helped LEED succeed and what we could use towards Envision success.
  - January 14 we will have a panel of speakers from Port of Seattle, WSDOT, and King County at the ASCE Dinner meeting, talking about each of their agencies sustainability policies and practices
  - Currently we are trying to put together a team to participate in Tacoma's Green Infrastructure Challenge. Registration is due by Dec 15 and the design submittal is due by Jan 15. It's Tacoma's first year having this challenge.
  - Tobin Booth from BlueOak Energy has committed to give a dinner presentation on solar panels at the April 2015 meeting. Dorothy Reed also agreed to provide information on the building code updates related to solar installations on roof tops. Email sent to Amanda Schweickert.
- **Transportation**
  - Joint meeting with ITE in December.

**YMF**

- **Past Events**
  - November 3 - Eastside Networking (15 YMs) Younger members gathered at Blue C Sushi to enjoy some appetizers and beverages. A number of members invited colleagues and there were quite a few new faces in attendance. 15 people were able to make it, an increase in attendance over the October event.
  - November 11 - Seattle Networking (11 YMs) The frigid winter weather didn't deter a devoted group of YMF'ers from attending November's

- networking event at Capitol Cider. Appetizers, conversation and some cider were enjoyed by all.
- November 15 - Community Service Event, Clarke Beach Clean-up and Restoration (11YMs) Our group of nearly 60 volunteers put 140 plants in the ground and mulched them all! After lunch, our 22 remaining folks cleared and mulched nearly 2,000 square feet of old-growth ivy. It's truly amazing to see how much work a dedicated group of people can get done such a short amount of time. Thanks to the Girl Scouts, ASCE, Teens Take Action, and all of the community members who spent their sunny Saturday with us. Clarke Beach has changed so much over the past few years thanks to dedicated volunteers like you!
- November 22 - WRYMC 2015 Scavenger Hunt & Pub Crawl Trial Run (26 YMs) On 11/22/2014, twenty-six members of YMF braved the cold weather to participate in the trial scavenger hunt in preparation for the actual event that will take place in WRYMC 2015. Five teams (comprising of three to seven team members) solved puzzles about various Seattle landmarks across downtown, while documenting the adventure with photographs uploaded to social media websites. Everyone involved had a grand time, and looks forward to WRYMC 2015.

- **Upcoming Events**

- December 9 - Young Professionals in Transportation Holiday Party
- December 11 - Engineers Without Borders Holiday Social
- December 15 - Officer's Meeting (Conference Call)
- December 16 - Annual Holiday Party and Toys for Tots (Pyramid Brewery)
- January 5 - Networking (Eastside)
- January 13 - Networking (Seattle)
- January 15 - Young Professionals Panel - University of Washington
- January 15 - PSEC Engineering Mentor Night - Seattle Central Community College
- January 22 - Young Professional Panel - Seattle University
- February 7 - Popsicle Stick Bridge Competition 2015
- February 20-21 - WRYMC 2015

See **December Minutes** on page 10

**• Committee Activities**

- We have started issuing all new checks from the new US Bank account. Can get about 0.5% in money market or CD, does Section get more than that?
- Nominations for WRYMC went in 12/5. Cal Bearman, Bethy Clark, Courtney Davis, Morgan Miller and Melissa Wu were nominated for individual awards. Seattle also applied for two group awards.
- PSEC awards due 12/22. Nominees: Cal Bearman, Erin Slayton and James Burke

**• Action Items**

- Need to get Constant Contact money from PM workshops
- Would like to request funds from Section for YMF operating budget and for WRYMC
- Will transfer funds from BECU to US Bank once all checks clear

- Need to get the YMF website updated with fixes to functionality
- We are looking into options for earning more interest on our savings so we can provide more scholarships in the future.

**Miscellaneous**

- WRYMC banquet invites.
- Region 8 awards deadline is March 15, 2015.
- American Wood Council postings

**Announcements**

- WRYMC.
- Popsicle stick bridge competition.
- January meeting.
- Member renewal.

Next board meeting January 14 at 4:30pm.

Meeting called to a close at 5:53 pm.

## New Member Report

Based on the new membership information from the ASCE national database, the following members enrolled to the Seattle Section between November 26, 2014 and January 2, 2015.

Hamid Abdirad  
Brad Allen  
Julia Anderson  
Tyler Averill  
Tom Bailey  
Aidin Behroozi Nobar  
Jonathan Carlson  
Xianzhe Chen  
Shannon Emerick  
Dorin Ghimpu  
Michael Gruzensky  
Donald Haines

Casey Hasen  
Brendan Herridge  
Randy Higuchi  
Jason Huang  
Tiffany Knapp  
Dinesh Kumar  
David Landrus  
Nicholas Levensgood  
Jessica Lim  
Robert McLe Reeve  
Yen Nhi Nguyen  
Damani Nkeiruka

Steven Parks  
Tuan-Vu Phan  
James Potterf  
Catherine Priester  
Chris Raftery  
Eric Rice  
Ryan Scheffler  
Michael Soha  
Kelemua Tesfaye  
Wendy Tieu  
Renee Vandermause  
Jessica Wren

# Puget Sound Engineering Council Coordinates Engineers Week Activities

By Paul Grant, P.E., M.ASCE

Founded in 1951 by the National Society of Professional Engineers, Engineers Week is celebrated annually by thousands of engineers, engineering students, teachers, and leaders in government and business. In 1988, the National Engineers Week consortium expanded its scope and now includes more than 100 engineering, scientific, and education societies and major corporations dedicated to promoting pre-college interest in math and science, and engineering as a career option. The Foundation also works to enhance the public understanding of engineering.

Traditionally, Engineers Week falls on the week of George Washington's Birthday. President Washington was the first military engineer and land surveyor, and is considered the father of the American engineering profession.

The purpose of Engineers Week is to highlight our profession to our community, to honor significant achievements of our members, and to note the importance of our profession in the quality of life that our community enjoys.

The Puget Sound Engineering Council (PSEC) is an umbrella organization for over 20 engineering organizations in the region, including ASCE. The following highlights some of the planned activities for Engineers Week and the Seattle Section's participation in these events.

## Engineering Fair – February 7th

As an early start to Engineer's Week, the Engineering Fair will be held Saturday, February 7th from 10 am to 4 pm at the Museum of Flight at 9404 East Marginal Way South. The event, which will be free and open to the general public, will be hosted by PSEC with participation from over 25 professional engineering societies and local colleges and universities. Each participating entity will staff booths with volunteers with interactive displays, posters, handouts, models, with the emphasis on hands on engineering experience that will inspire students to pursue studies in math, science and engineering.

ASCE will have a display booth at the fair again this year and the booth will be staffed by volunteers from the Section. Our display will include interactive activities such as building structures with gumdrops and toothpicks or straws and paperclips. The volunteers from past years had a great time and enjoyed interacting with the students.

In addition to the Section's display booth, the Younger Member Forum (YMF) hosts the Popsicle-Stick Bridge



(PSB) Competition at the fair in which over 20 teams of students from regional schools compete in various categories to see who builds the strongest bridge or which team can most accurately predict the maximum load carried by their bridge. This is a great and must see event that showcases the talents of the competing teams as well as the organization and enthusiasm of the YMF in orchestrating the event! For more information about the Fair visit PSEC's website at [www.pseconline.org](http://www.pseconline.org),

Student teams enter their bridges in the PSB competition and the entries are judged on various categories from aesthetics to load capacity.



## Engineer's Award Banquet

The 57th Annual PSEC Awards Banquet will be held Saturday, February 14th, at 6:00 PM at the Boeing Museum of Flight. This is a unique opportunity to celebrate the profession of engineering and to recognize the extraordinary achievements of our colleagues.

This year's keynote presentation will be provided by Ms. Paula Hammond, Senior Vice President with Parsons Brinckerhoff and former Secretary of Transportation for the state of Washington. The topic of Ms. Hammond's presentation will be "Engineering a Lasting Legacy for Puget Sound", where Ms. Hammond will show how engineering solutions have shaped Puget Sound and Washington state and contributed to our economic vitality.

Honorees for the evening will include the 2015 PSEC Academic Engineer of the Year, Government Engineer of

See **Engineers Week** on page 12

the Year, (WSPE) Professional Engineer of the Year, Young Engineer of the Year, and also the Kenneth W. Porter Award. This year, ASCE members will receive the following awards:

*Academic Engineer-of-the-Year*

**Prof. Gregory R. Miller, Ph.D., M.ASCE.**  
Department Chair, Civil & Environmental  
Engineering  
University of Washington

*Government Engineer-of-the-Year*

**Cindy M. Hirsch, P.E., M.ASCE**  
Lead Civil Engineer  
Federal Aviation Administration (FAA)  
Northwest Mountain Region Safety and Standards  
Branch

*Professional Engineer-of-the-Year*

**Ron Klemencic, P.E., S.E., Hon. AIA, M.ASCE**  
Chairman and CEO  
Magnusson Klemencic Associates (MKA)

*Young Engineer-of-the-Year*

**Cal Bearman, P.E., M.ASCE**  
Associate II  
Wiss, Janney, Elstner Associates

*Kenneth W. Porter Award (K-12 outreach)*

**Erin N. Slayton, P.E., M.ASCE**  
Associate Vice President and Managing Principal  
HDR Engineering, Inc.

Please join us at the banquet to honor the awards winners. For more information on the banquet and a link to the registration page, visit [www.pseonline.org/Events/AwardsBanquet/](http://www.pseonline.org/Events/AwardsBanquet/).

## K-12 Volunteer Opportunities

By Eset Alemu, P.E., M.ASCE, K-12 Outreach Chair

### Join the Volunteer Mailing List

2015 is shaping up to be the productive year for K-12 volunteering activities. We have a few exciting opportunities lined up for this winter and the coming year. If you like working with children, are passionate about engineering and have a few hours to spare on a weekend or after work, please join our volunteer mailing list. You will receive one email per month with updates and invitations to participate at different science and engineering fairs and STEM events as they come up. Please send an email to [eset.alemu@gmail.com](mailto:eset.alemu@gmail.com) to be added to the list.

### Central Sound Regional Science & Engineering Fair

When: March 7, 2015, 8 :00 - 1:00 pm

Where: Bellevue College, Bellevue, WA

The Central Sound Regional Science & Engineering Fair (CSRSEF) is an annual science and engineering competition for 9th-12th grade students in King and Snohomish Counties . The CSRSEF encourages and rewards innovative student research and provides professional scientists and engineers the chance to interact with some of the best and brightest young students in the region. Judges are needed to evaluate student projects, provide positive feedback to all participants and interact and answer questions about their profession. Please check out [www.bellevuecollege.edu/sciencefair/participate/judge/](http://www.bellevuecollege.edu/sciencefair/participate/judge/)

To sign up or for more information please email [kent.short@bellevuecollege.edu](mailto:kent.short@bellevuecollege.edu).